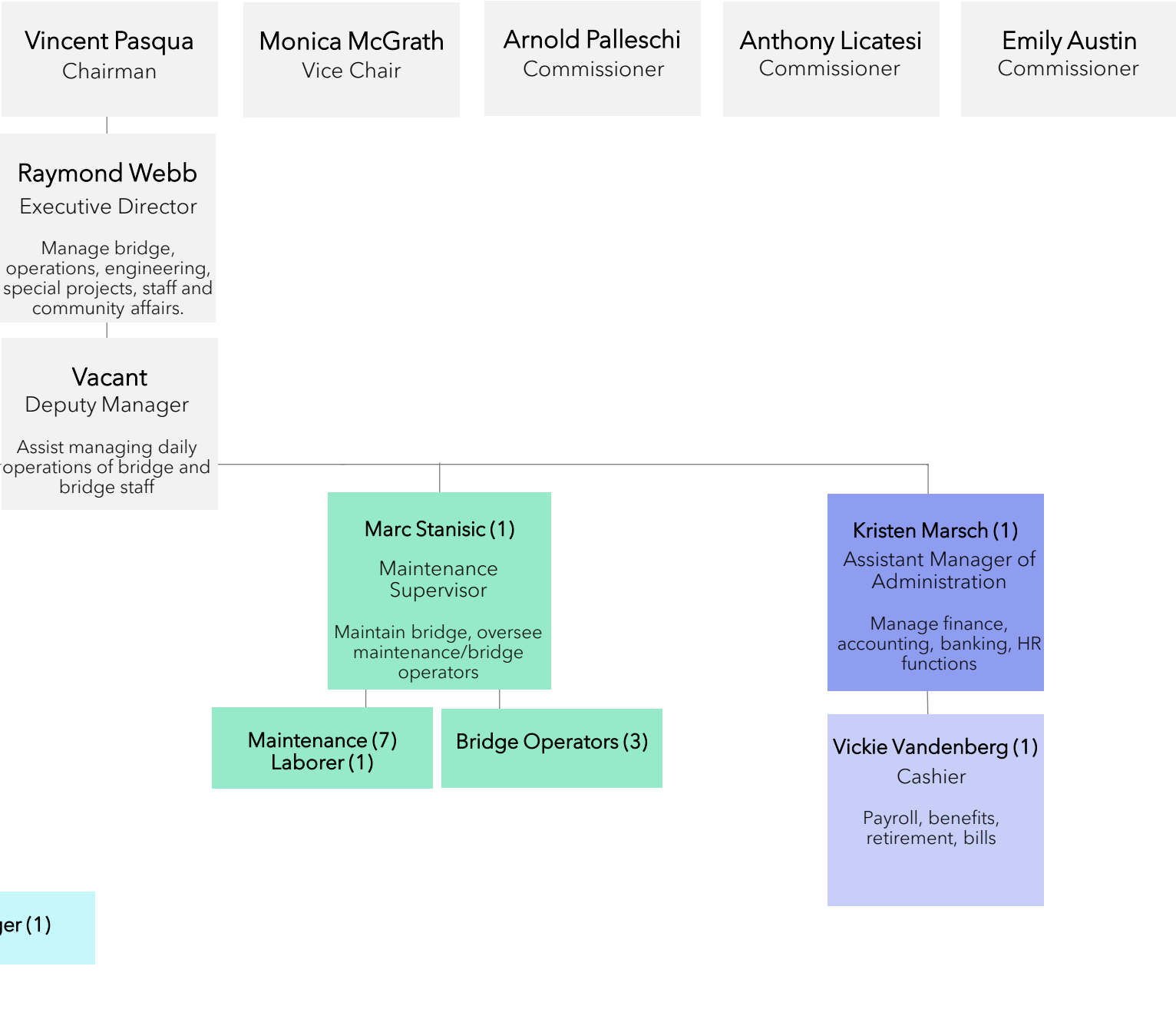


NASSAU COUNTY BRIDGE AUTHORITY Organization Chart



Vincent Pasqua
Chairman

Monica McGrath
Vice Chair

Arnold Palleschi
Commissioner

Anthony Licatesi
Commissioner

Emily Austin
Commissioner

Raymond Webb
Executive Director
Manage bridge, operations, engineering, special projects, staff and community affairs.

Vacant
Deputy Manager
Assist managing daily operations of bridge and bridge staff

Anthony Anselmo (1)
Assistant Toll Station Manager
Oversee toll staff, booths, scheduling/traffic

Jane Eversley (1)
Assistant Toll Station Manager
Oversee toll staff, booths, scheduling/traffic

Wing Lau (1)
IT Manager
Manage EZ Pass, website, special projects and all IT needs for bridge/staff

Marc Stanisic (1)
Maintenance Supervisor
Maintain bridge, oversee maintenance/bridge operators

Kristen Marsch (1)
Assistant Manager of Administration
Manage finance, accounting, banking, HR functions

Toll Supervisors (3)

F/T Toll Collectors (8)
P/T Toll Collectors (6)

John DeAngelis
IT Specialist II
Assist managing EZ Pass & all IT needs for bridge/staff

Maintenance (7)
Laborer (1)

Bridge Operators (3)

Vickie Vandenberg (1)
Cashier
Payroll, benefits, retirement, bills

IT/Back Office Staff
Cashier (2)
Toll Collector (1)
Maintenance (1)

Messenger (1)